

## 8.3 Dynamic Legend Generation

### Description ...

This program uses the MapInfo Map >> Create Legend functionality, and aims to streamline the process.

2 types of legend generation is available,

- Quick, or
- Comprehensive

The quick legend generation does exactly that, generates a legend on the opened layers within a Map Window, and displays these for each object found. The qualifier or description of the object is the name of the MapInfo layer or Table.

The comprehensive legend generator will create a legend from a MapInfo Map window for all the layers that are open.

The functionality of this module is that the Comprehensive Legend generator will loop through all the layers, and you the user will have the option to display it in the legend, ignore it or label the legend up on one or more fields. The legend loops through the opened layers from the top down (upper most layer is displayed first).

*Hint: You can order your map layers before you generate your legend to give the desired effect.*

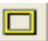
### Accessible from ...

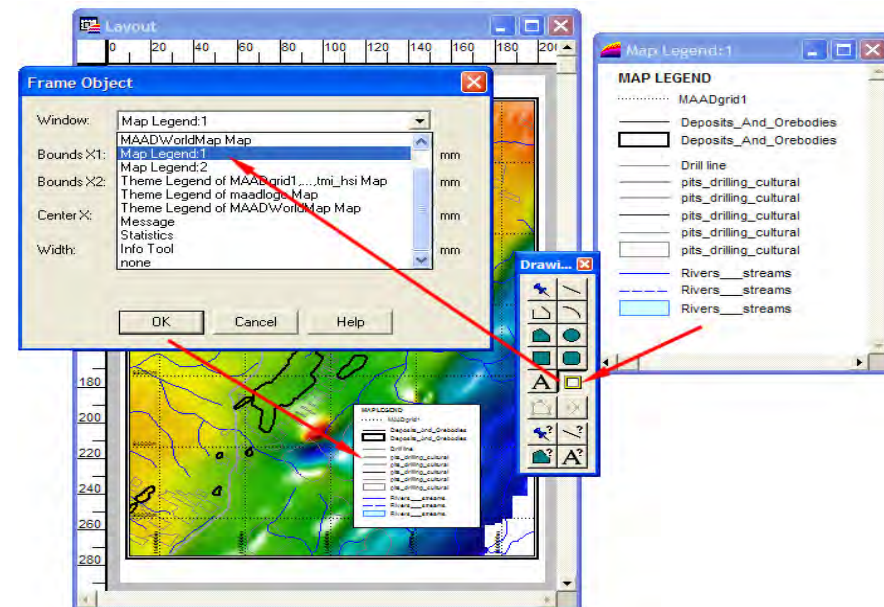
dropdown menu      **Dynamic Legend Generator**

toolbar button



### How to use ... Quick Legend Generator

1. From the menu, choose **Dynamic Legend Generator**.
2. Select the option for **Quick Legend generation**
3. The legend is generated as a MapInfo Legend (not saved as a table.). **To save this legend, a workspace must be saved.**
4. Import this legend onto your layout page by using the Frame tool  on the Drawing toolbar.

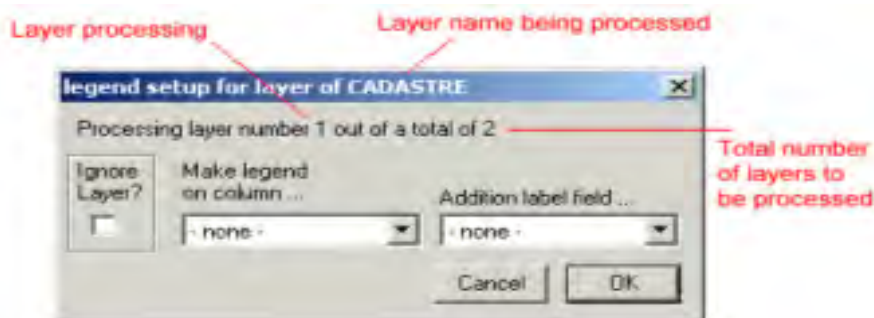


### How to use ... Comprehensive Legend Generator


1. Select the menu option of Dynamic Legend Generator.
2. Choose the Comprehensive Legend option from the dialogue box.
3. The program starts and displays the upper most layer in the legend

setup dialogue box.

If you want a layer not to be included in the legend, tick the checkbox of Ignore Layer on the left hand side of the dialogue box. If you don't ignore and leave the Make legend on column of none, then the legend output functionality will be the same as the Quick Legend option.



4. The program continues until all the layers have been analysed and displayed. To display text against the objects, choose a column to make the legend on. An additional column can be used to display associated text (maybe a description) for the objects.

5. The resulting MapInfo Legend can be inserted onto a Layout by using the Frame tool  which can be located on the Drawing toolbar (the yellow rectangle).

### Altering Legends.

To alter these legends, double click on the legend. Through the Legend Frame Properties dialogue, select an option to change. Key-in the correct text to describe the object.

*Note: Legends cannot be order in MapInfo version 7.8 and below.*

