

8.2 Scaled Map Production

Description ...

This functionality enables the GIS User to generate scaled maps and plans quickly and easily through a common interface. Additional functionality enables the user to add scalebars, titles, and map production information to the resulting MapInfo layout.

Accessible from ...

dropdown menu

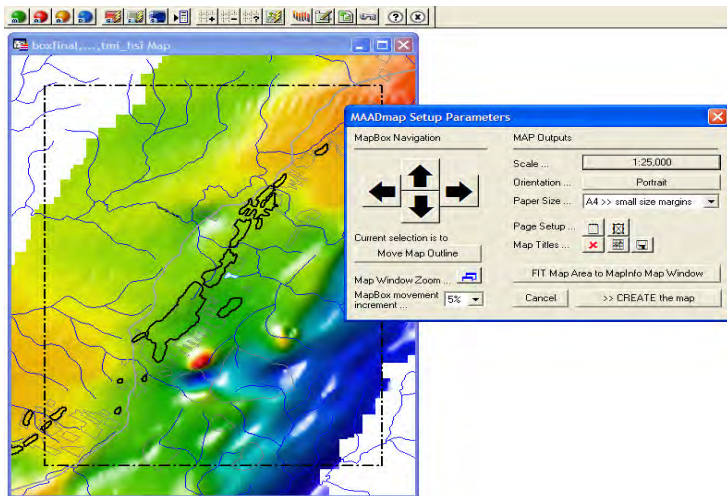
Dynamic Map Creation

toolbar button



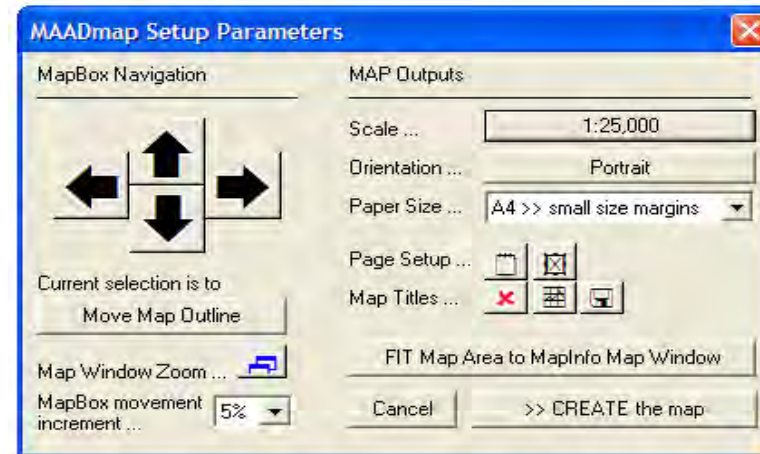
How to use ...

On selecting the dynamic map creator, the **MAADmaps Setup Parameters** dialogue box is displayed, and a **default map area** is defined within the **active MapInfo map window**.



The default map area displayed (layer called boxfinal), is determined from the **map outputs of scale, orientation and paper size**.

MAADgis creates this 'MapBox' at a suitable scale for the active map window, and defines the orientation to suit. The initial scale is in direct relation to the Paper size, this case being A4 with reduced margins (will suit all printers).



All configuration of the map area box (i.e. the MapBox), is controlled (position, extents, scale, etc) using functionality within the MAADmaps Setup Parameters dialogue box. Unlike other map making functionality that provide multi-step processes to produce a scaled map, this scaled map production contains that functionality within ONE interface.

To change the scale, select the Scale button. A separate dialogue pops up, enter the required scale and OK. The MapBox is now redrawn at the scale specified, for the orientation and paper size selected.

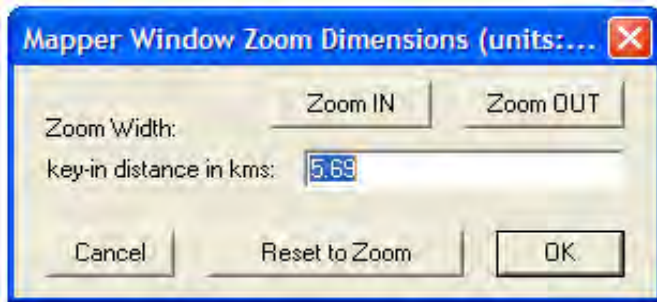
To move the MapBox, select one of the **LARGE black arrows** in the direction the MapBox is to move. If the centre of the map window is to move, toggle the button beneath 'Current selection is to' text. Once the

map window has been re-centred (again using the large black arrows for navigation, the current selection can be toggled from **‘Pan Map Window’**, back to **‘Move Map Outline’**’.

The amount the MapBox moves is determined by the MapBox movement increment dropdown list, where the default is 5% of the window width.

To zoom the map window in or out, select the  button.

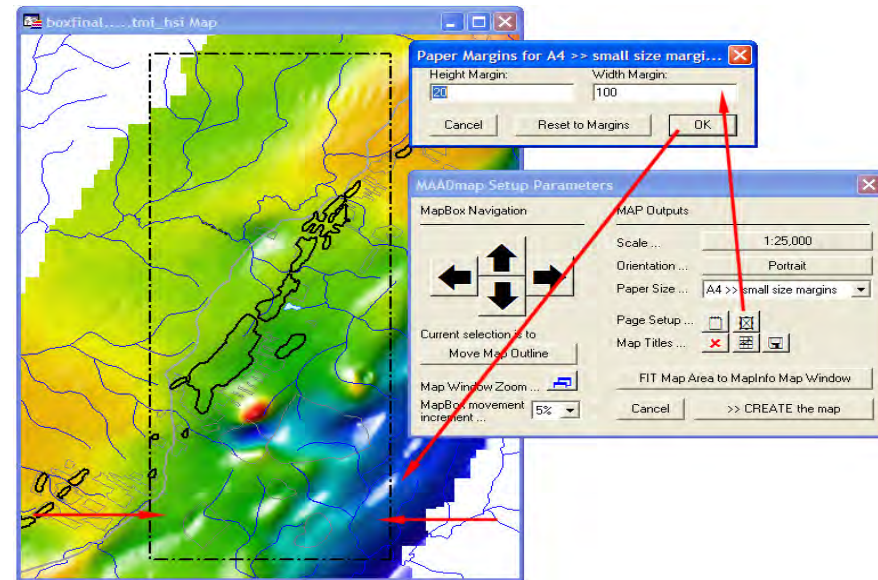
The Mapper Window Zoom Dimensions dialogue box provides options to zoom the window in or out by selecting the required buttons, or by entering a Zoom distance (same as the MapInfo Zoom scale usually located in the bottom left hand corner of the MapInfo Application window).



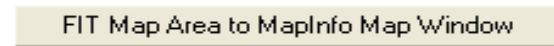
The dimensions of the MapBox’s margins can be changed and made to best fit the map data. This function works in conjunction with the current paper size setting.

To alter the page margins, select the  button

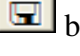
This function is handy if you have a long skinny map and you wish to best fit the data (i.e. this could be a geological cross section, or a piping plan).



To fit the MapBox to the MapInfo map window, select the button **‘FIT Map Area to MapInfo Map Window’**. This function is required to correctly transfer the dimensions of the map window, which has been set at a certain scale for a paper size, to a Layout window.



*This function is automatically called when the **‘>> CREATE the Map’** button is selected.*


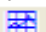
The resulting layout can be saved as a **MapInfo Workspace**. Using the Map Titles  button, this displays the MapInfo Save Workspace dialogue box.

Navigate to the location you wish to save your workspace to. The actual saving process only executes once the **‘>> CREATE the Map’** option has been selected.

Besides creating a map at the correct scale, additional niceties of a map can be added, such as titles, location diagrams, scalebars, and map borders.

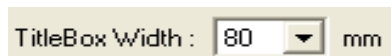
The user has full control over if they wish to create a map with a title or not, location of the titlebox on the map and also what is included in the resulting maps titlebox.

To turn the titlebox on, select the **Map Titles activate button**

Map Titles ...  (default is a red cross). This turns to the red cross to a green tick, and at the same time enables the **Title Box Configuration** button .

To access the Map Titles, Legend Label Setup Parameters, select the **Title Box Configuration button** .

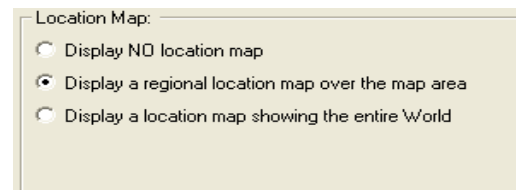
Size of the width of the titlebox.



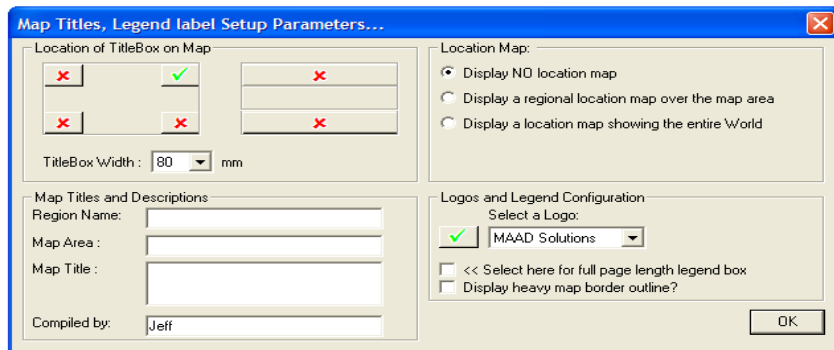
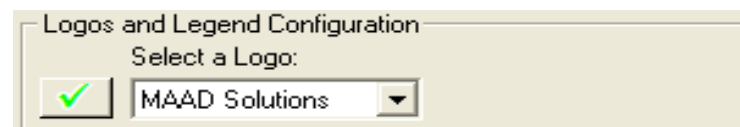
Map descriptions and titles to fully describe the map.



Display a location map (uses MAADworld and places a red star at the centre of the map's location).

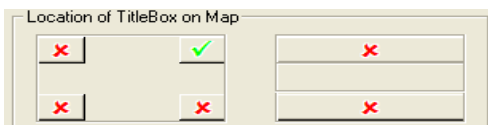


To include a logo or not, plus which logo to include (places logo at the head of the titlebox).



Through the Map Titles, Legend Label Setup Parameters dialog box, the user has the following options;

Location of the titlebox on the layout (select location).



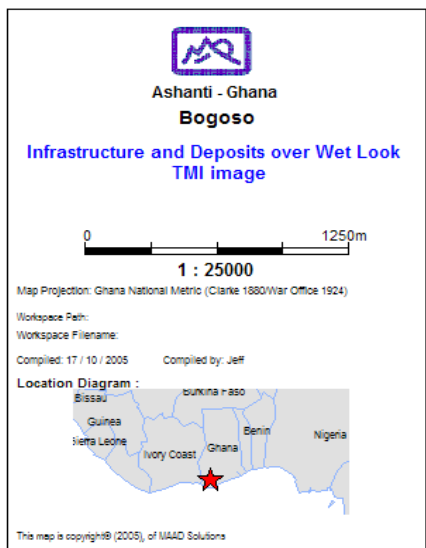
To make the titlebox the full length of the layout (used if a legend is to be added to the layout).

And if a **heavy black line around the outside of the map** is to be displayed (mainly for cosmetic reasons in order to fully create a high quality output).

- << Select here for full page length legend box
- Display heavy map border outline?

Selecting **OK** saves these settings and they are used when the '>> **CREATE the Map**' option has been selected.

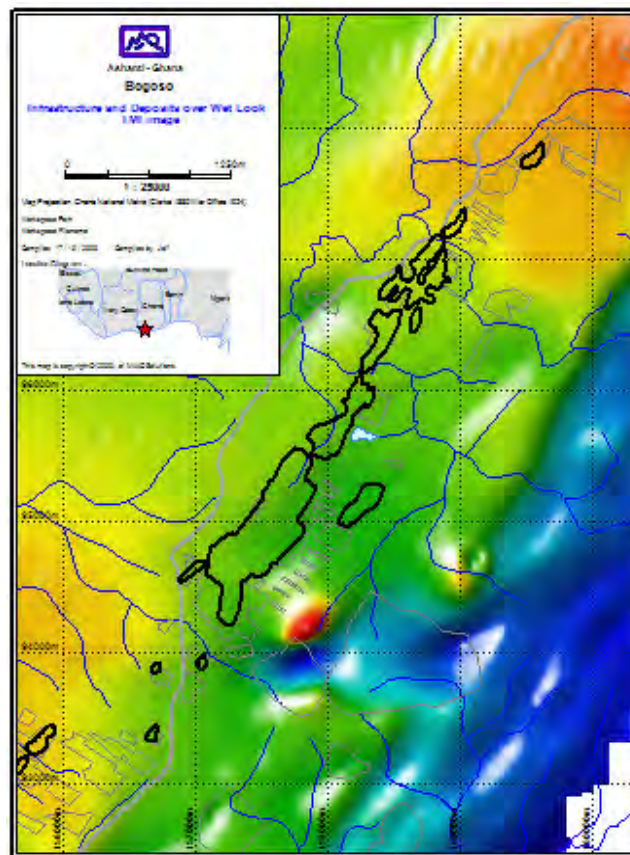
On selecting the '>> **CREATE the Map**' option, the map will resize itself to the scale and paper size specified (if it hasn't done so already), and then generate the layout.



Note: Everything added to the layout can be deleted, moved or altered as all objects are created on the layout directly (except with reference to the logos and the location diagram). The location diagram can be altered

(i.e. turn labels on, change the symbol, etc) by restoring the MAADworld map window and using the required MapInfo tool options to get the required effect.

If a grid hasn't already been added to the map window, then make the **map window active**, and use a **grid making option** as described in **section 8.1.2**.



Remember to save your workspace to save any changes made to the layout window.